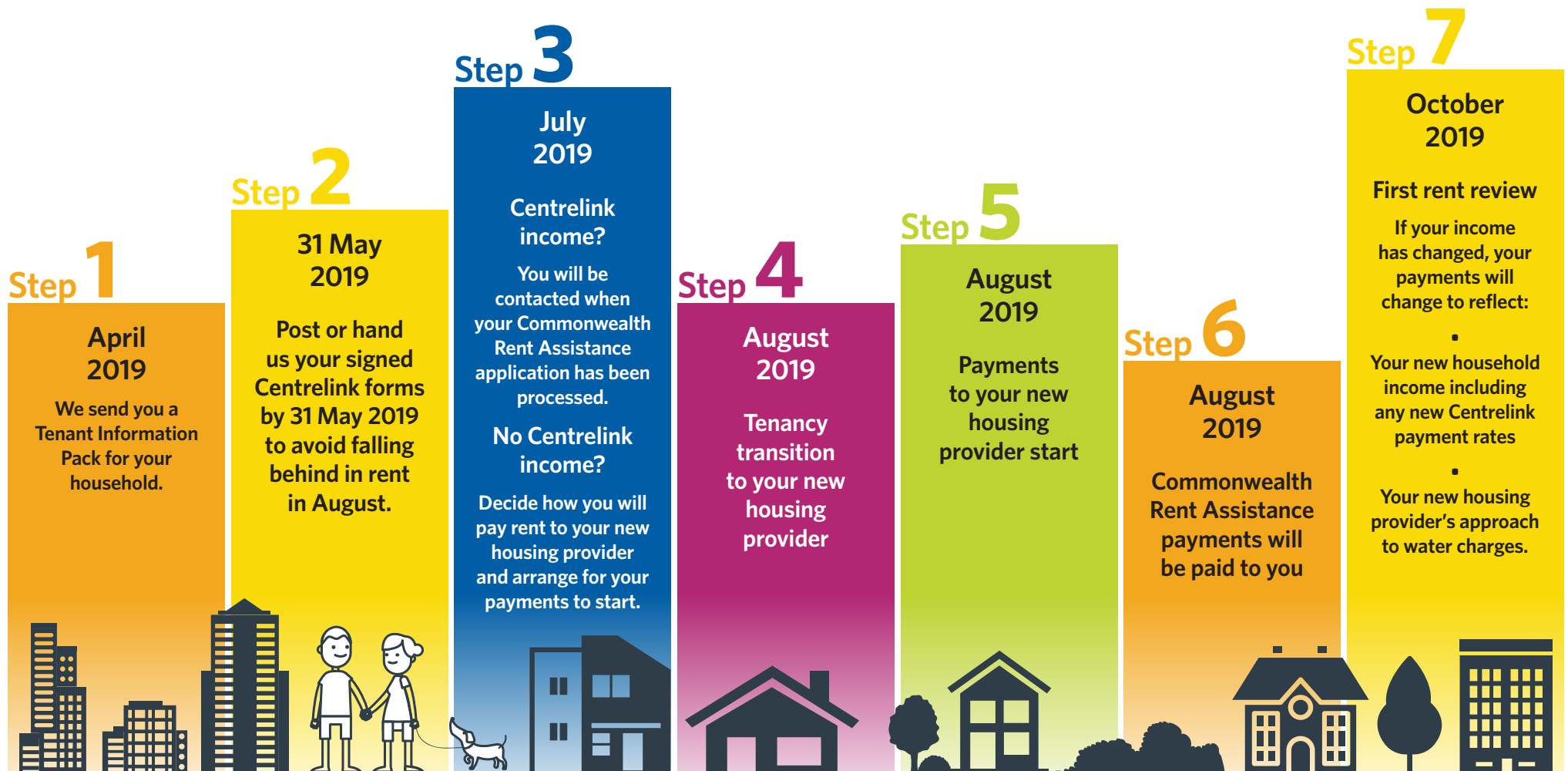


# Information for Northern Beaches tenants

## 7 steps to join your new housing provider



# Win prizes!

Return your forms early and be in the draw to win weekly\* \$100 prizes.

Get your forms back by Friday 10 May and you'll be eligible for all 4 weekly draws plus a final \$500 gift voucher draw on Friday 7 June 2019.

When you lodge your forms all household members will automatically go into the weekly draw for that and all future draws. Good luck!

**\$500  
GRAND  
PRIZE**

# Need more information?

- Phone us on **02 8324 0800** or email us at **northernbeaches@bridgehousing.org.au**
- Come to a Drop In session
- Talk to us when we are in your neighbourhood during May 2019
- Visit the Northern Beaches page on the Bridge Housing website at **www.bridgehousing.org.au** or visit the Women's Housing Company website at **www.womenshousingcompany.org.au**

## Book a visit

Phone Rita Merienne at FACS on **02 9809 8417** to book a joint visit to your home by a FACS staff member and a staff member from either Bridge Housing or the Women's Housing Company.

# Get your forms to us

<b>Post</b>	Use the reply paid envelope provided in your Tenant Information Pack
<b>FACS Brookvale office</b>	Drop your forms in at the FACS Office. 660-664 Pittwater Road, Brookvale from 1 May 2019.
<b>Drop In session</b>	Hand your forms to us at a Drop In session
<b>In person</b>	We will be visiting all Northern Beaches neighbourhoods during May 2019.



\*Friday 10 May to Friday 31 May 2019.

**bridge housing** linking people to a better future

Level 9, 1 Lawson Square, Redfern NSW 2016  
PO Box 1835, Strawberry Hills, NSW 2012  
T 8324 0800 F 9699 7055 E customerservice@bridgehousing.org.au  
[www.bridgehousing.org.au](http://www.bridgehousing.org.au)

 **women's**  
HOUSING COMPANY

Suite 901, Level 9, 418 A  
Elizabeth Street Surry Hills NSW 2010  
T 02 9281 1764 or 1300 942 111 (outside Sydney)  
E Contact@womenshousingcompany.org  
[www.womenshousingcompany.org.au](http://www.womenshousingcompany.org.au)